



Perennial Notes

September 2015

WHPS COMING EVENTS!

All regular meetings are 6:30 social time, 7:00 p.m. program at Olbrich Gardens Commons, 3330 Atwood Avenue, Madison, unless otherwise noted.

Wednesday, Sept 9, 6:00 p.m. *Tour of Rotary Botanical Gardens.* See page 2 for details.

Wednesday, September 16, *Fashionably Late: The Garden After August 1 - The Late Season Garden,* Dan Benarcik, Horticulturist, Chanticleer Garden - <http://www.chanticleergarden.org/>. So many people feel that the garden is finished at the first hint of fall. This talk will discuss options and additions to keep the garden alive with color and exhilarating texture throughout the fall.



He showed an interest in plants from the beginning, graduating from the University of Delaware with a Bachelor of Science degree in Plant Science. He then started work at the Woods Gardener at the Mt Cuba Center, which is dedicated to the research and protection of native plants, work that inspired a real love for this group of plants and that eventually led to a position at Chanticleer Garden, which emphasized innovation through the the exploration of ideas and artistry in the garden. Overseeing the Courtyard Gardens, with its emphasis on tropical, sub-tropical and tender perennials for seasonal display, he dedicated himself to creating the visitor's first and last impression of the garden. Benarcik's enjoyment of sharing information regarding plants and design has led to his second career as a Regional Director with Garden Writers Association, contributing to *Fine Gardening*, *Horticulture*, *Martha Stewart Living* and Rodale's gardening books. On television, he has promoted plants on QVC for Cottage Farms Nursery, and has been featured in episodes of *Cultivating Life*. His enthusiasm for design has led him to teach chair building workshops, in addition to working with the continuing education program at Longwood Gardens and volunteering on the Plant Selection Committee of the Delaware Center for Horticulture's Rare Plant Auction.

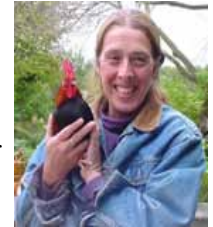
Sunday, September 20, *WHPS Plant Exchange,* 10:00-10:30 a.m. plant setup, 10:30-Noon picking plants. Olbrich Gardens, 3330 Atwood Ave., Madison, next to Children's Garden. Bring a plant—get a plant! Set up your extra plants from 10:00-10:30 a.m. and then see what you can find to take home! You'll find woody plants, sun and shade perennials—even some bulbs and houseplants. A great way to get some needed plants at a time that's perfect for planting them and a chance to take a walk through Olbrich Gardens afterwards.

Saturday, October 10, 1:30 p.m., *Tour of Lonegecker Horticultural Gardens.* See page 2 for details.

Wednesday, October 21, *The Evening Garden,* with Zannah Crowe of Monches Farm, Colgate, WI. Busy work schedules keep many of us away from our gardens during the daylight hours and it is often evening when we find time to relax in our gardens. Horticulturist Zannah Crowe will present a program on

the evening garden, including plant selection, lighting, sound and fragrance.

Crowe has a degree in Landscape Architecture from UW-Madison and has been working in the field of horticulture for over 30 years. She managed the perennial plant division of a specialty nursery in Connecticut for 12 years before returning to her Midwestern roots when her son was born. For the past 18 years, she has been employed as the lead horticulturist at Monches Farm, a perennial plant nursery that has been a destination for adventurous & discerning gardeners since 1981. In addition to gardening, Zannah is a hobbyist photographer, with several published photos in national magazines. She shares her home with her husband, two lovely children and a menagerie of companion animals. <http://www.monchesfarm.com/>



Wednesday, November 18, *Cool, Non-wimpy Plants You Haven't Heard of,* with Joseph Tychonievich. There are tons of plants you've never heard of or never grown in your garden. Problem is, most of them you've not grown for a reason: either they're just not that pretty, or they're not good growers. In this talk, Tychonievich will introduce you to some of his favorite super-cool, super-low-drama plants that will be a dependable, beautiful addition to your garden, along with some tips and ideas on where to find other great plants worth trying.



A life-long gardener and lover of plants, Joseph earned his BS in horticulture from Ohio State University, went on to work for Shibamichi Honten Nursery in Saitama, Japan, has been a repeated guest on Public radio's food show *The Splendid Table*, wrote a book, *Plant Breeding for the Home Gardener* (Timber Press, 2013), spent two years working at the famed rare plants nursery Arrowhead Alpines, and was named by *Organic Gardening Magazine* as one of "...six young horticulturists who are helping to shape how America gardens." Currently Joseph lives and gardens with his husband and an adorable black cat in SE Michigan and is working on his second book, on rock gardening, due out the summer of 2016.

continued on next page



<https://www.facebook.com/WisHardyPlantSociety>

COMING EVENTS, continued from previous page

Wednesday, December 2, Annual Meeting, Member Potpourri and Seed Exchange. If you haven't attended the WHPS Annual Meeting, Seed Exchange and Member Potpourri, you've been missing a great opportunity to network with member gardeners, pick up some annual and perennial seeds, bulbs and tubers to store over the winter (http://www.wisconsinhardyplantsociety.com/documents/Seed_Exchange_FAQ_9-2002.pdf), and show/view photos/videos of member gardens and memorable gardens visited. *What photos will you show in December?*

Sunday, January 17, 2016, WHPS Potluck Brunch and Winter Walk Through Olbrich Gardens.

Friday-Sunday, February 12-14, 2016, WHPS Booth at Garden Expo and sponsor of speaker Roy Diblik, Northwind Perennial Farm.

Wednesday, February 17, 2016, History of the Chicago Botanic Garden with speaker Kris Jarantoski, Executive Vice President and Director, Chicago Botanic Garden http://www.chicagobotanic.org/info/senior_staff/jarantoski

Wednesday, March 16, 2016, Epimediums: Jewels of the Shade with speaker Karen Perkins, Garden Vision Epimediums <http://www.epimediums.com/>

Wednesday, April 20, 2016, TBD

WHPS PLANT SALE MAY 2016!

Tour of Rotary Gardens with Mark Dwyer, Co-director

Wednesday, Sept 9, 2015, 6:00 p.m.
Rotary Botanical Gardens, 1455 Palmer Dr, Janesville

We will meet Mark in the building to start the tour promptly at 6:00 PM. The building closes at 6:00. If anyone arrives late, Mark will have a volunteer near the big sculpture out front until about 6:20 to let people in and catch up with the tour.

You might want to arrive early to check out the Thomas Jefferson display (identify yourself as a WHPS member for free entry). We'll see it during the tour, but will have limited time to read the signage. As Mark describes: *This is the second (and final) year for the popular Thomas Jefferson Collection at Rotary Botanical Gardens. We are displaying over 100 varieties of historic vegetables, herbs, perennials and annuals that Thomas Jefferson displayed at Monticello. Thirteen garden beds feature these many selections, all of which have informative signage regarding these specific plants. This garden was inspired by a visit to Monticello by a RBG grounds staff member and we have been consulting with gardening staff at Monticello as well (with much of our historic seed coming from them...)!*

Directions to Rotary from Madison: Take Interstate 90E toward Chicago. In Janesville, take Exit 175. Veer right on the exiting roundabout. Travel 1/2 mile to the first stoplight (Palmer Dr) and turn left. Continue 1 mile to the Parker Education Center on the right.

Tour of Longenecker Horticultural Gardens at the UW Arboretum

Saturday, October 10, 2015
1:30 p.m.

Join us for a walking tour of Longenecker Horticultural Gardens with their retired curator Professor Emeritus Ed Hasselkus and their new curator David Stevens. Meet at the entrance to Longenecker Horticultural Gardens near the Arboretum Visitor Center 1207 Seminole Highway, Madison.

Upcoming Trips - Winter Bus Trips

We will be offering two one-day bus trips this winter.

A separate trips brochure for these (with registration forms) will be sent out in early October.

Tuesday, December 1, 2015 - Illumination: Tree Lights at the Morton Arboretum in Lisle IL. This is an evening light show, so will have a late return (probably about 11:00 PM). This is the third year this show has happened and here are quotes from WHPS members who have seen it in previous years:

Illumination is a light and plant show like none I've ever seen. I can't wait for my next visit and encourage anyone who hasn't seen it to do so! The lighting is so much more than traditional strings of lights wrapped around metal and wooden forms or trees and shrubs – it is less about the lights and more about the trees. The landscape style lighting in a rainbow of colors illuminates the landscape and celebrates the beautiful varied forms of some of the most magnificent trees in the Morton's wonderful collection. Words can't describe the beauty and complexity of the show – you have to go see it for yourself! - Jeff Epping

Bob and I saw the light show last year for the first time. While the Morton Arboretum is a most extraordinary museum of woody plants, the Illumination light show presented the arboretum landscape and its trees in an unbelievably magical and amaz-

ingly beautiful musical extravaganza. We were totally mesmerized as we saw the arboretum in the most creatively produced light show imaginable. - Barb Wetzel

Monday, March 14, 2016 - Chicago Flower and Garden Show at Navy Pier

Presented by Mariano's, the roots of the Chicago Flower & Garden Show date back as far as 1847 and create an experience that attendees will not soon forget by presenting realistic, as well as DIY solutions to inspire, educate and motivate the next generation of gardener.

The 2016 theme CHICAGO IS will spotlight all that is Chicago – including its culture, cuisine, art, design, neighborhoods and community. – The Show treats 40,000+ gardening enthusiasts and newbies alike to the sights, scents and sounds of feature gardens with blooming perennials, annuals and trees while water features rustle throughout the Festival Halls of Chicago's acclaimed Navy Pier

Other 2016 bus trips will be announced at a later date.

2016 WHPS English Garden Tour—Hampshire, Dorset and the Cotswolds

The WHPS will be offering its biennial England trip June 10-19, 2016 (but remember, people will have to fly out on June 9 or earlier). Focus will be on Dorset, Somerset, Wiltshire, and Gloucestershire/Cotswolds. It will start and end from Heathrow and the first day will be spent at Wisley after pick up at Heathrow.

Tour begins mid morning Friday June 10 at Terminal 3 at London's Heathrow Airport and ends the evening of Saturday June 18th at the Heathrow Marriott, Bath Road, Heathrow.

First things First: Total cost is approximately \$2500 PLUS air fare. Single supplement is \$300. Includes 9 nights in 4 star hotels, bus transportation, entrance to all gardens, all breakfasts and dinners, and many lunches (if you include the garden teas). We will have Marilyn Parker as our Blue Badge Guide, once again, who has accompanied us on the 2012 and 2014 tours, and has received rave reviews from previous participants. Please keep in mind the price is quoted to us in pounds. We have anticipated some fall in the dollar against the pound between now and next spring and also have included tips for our guide and the bus driver in the cost estimate. There is also portage for one bag per person included in the cost.

THE GARDENS: At present we are booked into 24 gardens, a tour of the Winchester Cathedral with its garden, the shop of an Arts & Crafts furniture/ silver maker with tea (no, this is not a misprint!), and free time in the charming Cotswold towns of Cirencester and Chipping Camden (now don't get carried away with shopping expectations—there is not that much free time!) For those of you who have not been on these tours before, the gardens are a nice mix from the smallest to the largest gardens that you can wangle your way into. Some have their own restaurants and garden shops. At least two of the gardens are very private and open infrequently, and Frank is especially excited about these. If you do the math, discounting the first day (see below) we will visit about 3 gardens a day. The gardens are typically close together which minimizes travel time.

Most of the first day will be spent at Wisley, the premier garden of the Royal Horticulture Society just to the West of London. You will have time here for lunch, the garden shop and the garden bookstore, to say nothing of all the different gardens and glass houses. As gardens go, this is the only three-ring circus, so to speak, that we will visit on this trip. Frank considers this a must

visit garden, even though many English folks don't consider it "a garden" in the true sense of the word. As a group, we have not visited Wisley since at least 2010.

In addition to Wisley, we will visit three gardens that we visited on our very first tour in 1992—Hidcote, Stourhead, and Maperton. The latter is one of Frank's favorite gardens of all times, and is the ultimate in garden surprise—mind the gap in the hedge! There are no other repeat gardens on this trip.

Accommodations: Overnights will include two at the Grand Harbour Hotel in Southampton, four nights in the Norfolk Hotel in Bournemouth (we have stayed here previously), two nights in Hatton Court in the Cotswolds (have stayed here on two previous trips), and the final night at the Marriott at Heathrow Airport in London.

Important Details

If you would like to reserve a place on this tour (costed for 30 persons, the ideal number—we can accommodate a few more), please send a check for \$250 to Frank Greer, 925 Waban Hill, Madison, WI 53711. The check should be made out to the WHPS. If for some reason you have to cancel out of the tour, every effort will be made to refund the \$250. Keep in mind that once the deposit is sent to hold the rooms at the hotels, we will not be able to get our deposits back. Final payment will be due in early May.

We typically have one or two folks without roommates—every effort will be made to match you up with someone who is compatible and give you the opportunity to meet at one of our upcoming meetings before the England trip.

For a copy of the full itinerary (gardens always subject to change—invariably we hear about a better one) or if you have any questions, please email Frank Greer at frgreer@sbcglobal.net. If you are thinking about going Frank will be happy to talk you into it at 608-233-4686.

Results of Member Survey

Late last winter we sent out a survey to our members. We have grown to over 800 individuals and businesses and are in the process of applying for 501(c)3 status for our organization and wanted to find out more about our members and their interests, to better serve you in the future. The response to the survey was good, over 20 percent. Here are a few of the results.

WHPS presently skews older: 91% of the respondents were older than 51, with 78% female and 58% retired. 76% of the respondents described themselves as advanced gardeners (gardening for many years). Many respondents said they would like to see younger gardeners join and become more involved.

89% percent of the respondents said that WHPS was meeting their needs as a member. Respondents were fairly evenly interested (40-67%) among bus trips, garden tours, meetings, newsletters, meeting other gardeners and plant sales, with less interest in our Seed Exchange (23%). The Website and Facebook page are not used extensively: 46% visit the Website monthly, primarily to check the events calendar; 70% of the respondents have never visited WHPS on Facebook. We hope to increase that interest in social media in order to communicate more readily and more often with you. Comments on areas of interest included shade perennials, trees and shrubs, but also many comments on habitat for birds and other wildlife, native plants, sustainability and "green" practices, edible landscaping, garden design and general garden principles.

On the whole, WHPS is doing a good job, but there are challenges to be met: trips and tours inclusive to as many of you as possible; programs that keep you informed of what's new while continuing to discuss established plants and practices; keeping our newsletter relevant and increasing interest in our Website and Facebook page—all of this and more is top of mind as we move forward.

Thanks to everyone who participated in the survey. Remember, you can ALWAYS feel free to contact any of our Directors (names and contact info on back of newsletter) if you need information or want to comment or help with WHPS in any way.

Mark's Musings

*Greetings from Rotary Botanical Gardens
in Janesville, Wisconsin!*

Hello fellow WHPS Members! It's been a long time since I've submitted to the newsletter and that is not for lack of wanting to contribute! We've had some significant staff changes over the last two years and I've taken on added duties of Interim Executive Director of the garden and more recently have become Co-Director of the garden.

My primary interest, aside from the continued success of the gardens of course, is the wide range of plants that we are displaying at the gardens. If you missed our 25th Anniversary year in 2014, we hope you'll still make the journey to Janesville to see the late summer and early fall color at the gardens in 2015. While our collections certainly include lots of seasonal plants (150,000 this year), we have a sizeable framework of woody plants and perennials in our 24 distinctive garden areas over our 20 acres. Certainly don't miss the annual Holiday Light Show, which has an expanded route this year, featuring 370,000 lights, hundreds of displays, refreshments, entertainment and much more. Check out our Website at www.rotarybotanicalgardens.org for more information on this event, educational opportunities, our Fall Symposium and much more.

But let's get back to the plants! I've been coaxed to include some favorites, which is hard to do as I have so many plants that I have become quite fond of over the years. For shadier gardens, I'm very excited about the 'Sun King' Japanese spikenard (*Aralia cordata*), with bright gold foliage and a bold texture that



Aralia cordata 'Sun King'

is very engaging. I also am a big fan of yellow waxy bells (*Kirengeshoma* sp.) for dramatic foliage texture and late season blooms in the partly shaded garden. Certainly don't neglect hostas, ferns, epimediums, hellebores, etc. as they all have value. However, some of these newer false-forget-me-not (*Brunnera macrophylla*) selections are exciting. Most of you know 'Jack Frost', which is an old "stand by" with lots of silver on the foliage, but do look into 'Silver Heart', 'Sea Heart' and 'Alexander's Great' for larger, leathery leaves that really add some "illumination" in the partly shaded border. The late summer, reddish tinting of mukdenia (*Mukdenia rossii* 'Karasuba' or 'Crimson Fans') is also a welcome addition to the shadier palette.

In the sun, I've become smitten with compact selections of Helen's flower (*Helenium autumnale*) and am a big fan of 'Tie Dye' and any of the Mariachi™ selections for a more compact contribution of summer color. The breeding in false indigo (*Baptisia* sp.) selections has become very exciting, with so many selections out there. Look for some of the best new selections out of Walters Gardens (Hans Hansen and the Decadence® Series) and the Chicago Botanic Garden (Dr. Jim Ault and the Prairieblues™ Se-



Helenium autumnale
'Tie Dye'

ries). The jury is still out on all of these new coneflower (*Echinacea*) selections. While they all look good in the catalogs, they vary in their vigor, stem strength, color progression and duration of impact. I think the Sombrero® series is good but I continue to rely on older favorites and many of the native species. Stonecrop (*Sedum* sp.) selections continue to be exciting with my current favorites being 'Postman's Pride' and 'Chocolate Drop', both of which have glossy, near black foliage and pink flower clusters late in the season. Don't neglect dabbling with many of the new tickseed (*Coreopsis*) selections, as well as some of the exciting and tough veronicas, salvias, lobelias and rudbeckias! Ornamental grasses continue to be exciting in the landscape and I've become obsessed with the "red-tinted," smaller stature switch-grasses (*Panicum virgatum*) like Ruby Ribbons™ ('RR1') and 'Prairie Fire'.

Some "must-have" woody plants in my opinion include fragrant abelia (*Abelia mosanensis*) for spring fragrance and excellent fall color. Look to some of the fun new deutzias like Chardonnay Pearls® ('Duncan') and Crème Fraiche® ('Mincream') for



Abelia mosanensis

golden and cream variegated foliage respectively. Some of the more compact selections of ninebark (*Physocarpus opulifolius*) have merit in the smaller garden, as do the wide selection of dwarf and miniature conifers. There are some great opportunities out there for trees as well, although a focus on more compact or narrow forms might be appropriate for the residential setting. Goldspire™ ginkgo (*Ginkgo biloba* 'Blagon') is an excellent selection with form and durability. I'm also a big fan of seven sons flower (*Heptacodium miconioides*) which is just starting to bloom, with fragrant white flower clusters. Some of the best specimens of Heptacodium can be found at Olbrich Botanical Gardens in Madison, WI. Visit your local botanical garden or arboretum to get more ideas.

Rotary Botanical Gardens will celebrate 27 years in 2016 and we have lots of fun seasonal displays and themes planned. We will continue to augment our perennial collections and will likely have a spring division and sale of many of our hostas and daylilies, among other selections. With over 3,000 varieties of perennials on display, we will continue to obtain, plant, label, evaluate and promote a wide range of hardy plants suitable for our area. The mission of the gardens revolves around education and the appreciation of horticulture. Do check our Website out often and consider following my blog at www.rotarygardens.blogspot.com to see what's happening out in the gardens. Please consider this an open invitation to come and see Rotary Botanical Gardens in Janesville, WI.



— Mark Dwyer, Co-director
Rotary Gardens

WHPS Volunteer Opportunities

WHPS has several areas where you can have a direct impact on the success of our organization. Won't you consider donating some time in the next year?

- Serve on the board
- Work at the WHPS Booth at the Garden Expo
- Plant Sale—can you dig it? Help keep the timeline for the sale, donate plants, host a dig, work a dig, transport plants, coordinate announcements, emails and notices marketing the sale, help set up the day before, work the sale day, clean up after
- Coordinate the Fall Plant Exchange—great title with only four hours work!
- Assist with production of the Newsletter—Do you like to do newsletter layout? How about editing and helping to create/locate content?

If you are interested in helping with any of these areas, please contact Stephanie O'Neal at sone2@aol.com, 608-256-6108, and she will put you in touch with those who can get you started.

UPDATE: Donation to Public Garden in Madison - Blair Street Gardens

A public garden has existed in downtown Madison at the corner of John Nolen Drive, Blair Street, Wilson Street and Williamson Street since about 1985, created and maintained by neighborhood volunteers under the organizational structure of Blair Street Gardens Committee, Inc. Located in front of the Gateway Mall, and informally called The Gateway Garden, the garden consists of trees, evergreens, perennials, and most notably a long, curved bed of spring bulbs and summer annuals. The garden is viewed by a substantial population every day. The garden is adjacent to the Capitol City Bike Trail and the Gateway Mall. It is also next to pedestrian sidewalks that are heavily utilized by foot traffic, as well as a very heavily used vehicular intersection. The garden is a beautiful but static space, and requires a great deal of water, fertilizer and volunteer labor to maintain.

Thanks to the Wisconsin Hardy Plant Society and others, the area will be transformed into a welcoming destination for bicyclists and pedestrians, while reducing the use of resources. The area will be re-graded; retaining walls, walkways, and seating areas with benches created; the ash trees removed; and new garden areas created with native grasses, perennials, shrubs and trees.

Blair Street Gardens is collaborating with Avant Gardening and Landscaping, the Marquette Neighborhood Association, Bruce Woods, PLA, and the City of Madison to redesign the Gateway Garden. Avant is celebrating its 30-year anniversary this year and is donating \$10,000 of labor and equipment use to redevelop the area. In addition, the City of Madison has granted \$5,000 toward the project. And the Wisconsin Hardy Plant Society has donated \$500 to be used for plant materials.

The entire area will be regraded to create a three-foot-high earth berm. This will create a buffer from the heavy vehicular traffic and provide a sense of privacy, without compromising safety or views into the space. The earth berm will be retained by large limestone rectangular outcropping stones and native Wisconsin glacial boulders.

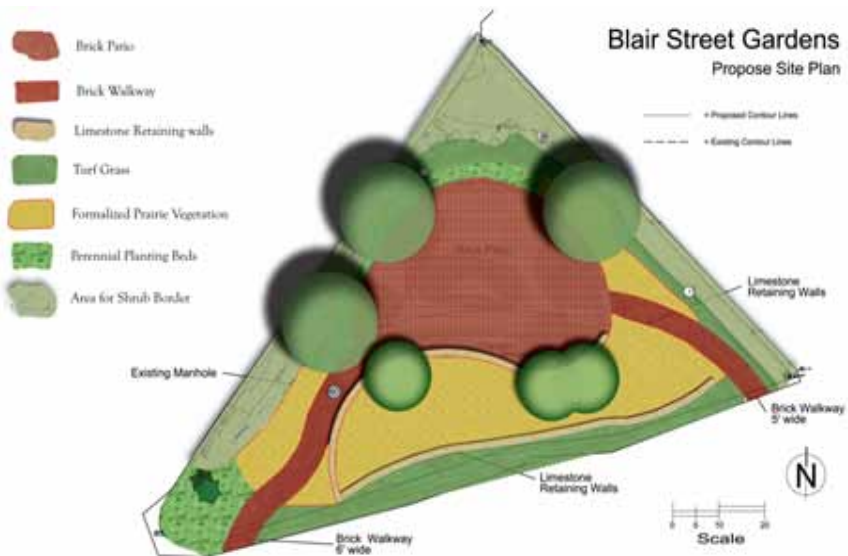
A 30-foot-diameter patio behind the berm will be created. Large benches will be arranged within and around the patio. Three stabilized gravel pathways will lead to the patio. An outer ring of large stones will retain the slope around the patio. A drinking fountain will be added.

The earth berm will contain large swaths of native grasses such as little bluestem (*Schizachyrium scoparium*) and prairie dropseed (*Sporobolus heterolepis*), interspersed with blazing star (*Liatriis spicata*). These plants are urban tolerant and will create a soft visual plane leading to the view behind.

Once within the garden, larger groupings of low-growing native shrubs such as dogwoods, sumac, yews and junipers will fill the bed areas. Immediately surrounding the south side of the patio will be a "Gravel Garden," constructed in similar style to the one at Olbrich Botanical Gardens. Gravel gardens have proven to be very low maintenance and are very colorful and attractive. This garden will be planted in a random design of native prairie flowers and grasses.

Construction is planned to begin in October of 2015. When completed in 2016, the area will be a vibrant public space for bicyclists, pedestrians and motorists to enjoy. Thank you to the Wisconsin Hardy Plant Society and its members for contributing to this work.

For more information, visit Blair Street Gardens' website at www.blairstreetgardens.org or its Facebook page.



2015 Calendar of Gardening Events

Wednesday-Friday, September 2-October 30 GLEAM: ART IN A NEW LIGHT, 7:30 - 10:30 pm (last ticket sold at 10 pm)

This fall, Olbrich Botanical Gardens unveils GLEAM, a cutting-edge exhibition featuring site-specific art and light installations in the outdoor gardens. Local artists and professional lighting designers will collaborate to create sculptural art, featuring light as a major component in each installation.

Saturday, September 12-Sunday, September 13, Rotary Botanical Gardens Fall Plant Sale, 9 am-4 pm, 1455 Palmer Drive, Janesville, <http://rotarybotanicalgardens.org/events>

Wednesday, September 16, WHPS Program - Fashionably Late: The Garden After August 1 - The Late Season Garden, Dan Benarcik, Horticulturist, Chanticleer Garden, <http://www.chanticleergarden.org/>

Wednesday, September 16, Rotary Botanical Gardens Evening Garden Seminar - Loving Lavender, 6:30-8 pm, 1455 Palmer Drive, Janesville, <http://rotarybotanicalgardens.org/events>.

Sunday, September 20, UW-Arboretum 2015 Native Gardening Conference, *Native By Design: Gardening for a Sustainable Future*. 8:45 a.m.-4:30 p.m.; cost \$60. Keynote: *Wild Gardening with Art and Purposefulness*, by Nancy Aten from Landscapes of Place, LLC. For more details and to register online, go to <https://arboretum.wisc.edu/visit/events/native-gardening-conference/> Registration deadline Sept 10. Questions: (608) 263-7888.

September 20, WHPS Plant Exchange 10:00-Noon Olbrich Gardens parking lot next to Children's Garden (more info page 1)

Sept 22-25, 2015 International Master Gardener Conference, Council Bluffs IA. The 2015 IMGCC will be hosted by Iowa State University and University of Nebraska-Lincoln Extension Master Gardener Programs in Council Bluffs, IA. Non-master gardeners may attend. See the IMGCC conference website for more details: <http://mastergardener.unl.edu/imgc2015>

Habitat for Humanity of Dane County will have its Fourth and final plant sale of the year **Friday and Saturday, September 25th and 26th** at the Habitat ReStore East, 4207 Monona Drive, Monona. Hours for the sale are 9 a.m. to 5 p.m. Featuring 55 varieties of daylilies donated by the Wisconsin Daylily Society—many colors and sizes with pictures. A local iris grower has donated a number of iris cultivars in a variety of colors and sizes, with pictures to help you make your choice. Perennial grasses, ground covers, hosta and ferns are available, along with other prairie plants and flowering perennials. Plant prices are \$4 each or 3 for \$10, unless otherwise marked. All proceeds are used to help build homes for Habitat families in Dane County.

Saturday, October 12, WHPS Tour of Lonegecker Horticultural Gardens at the UW Arboretum by their Curator, Professor Emeritus Ed Hasselkus, see page 2.

Wednesday, October 21, WHPS Program - The Evening Garden, Zannah Crowe, Horticulturist, Monches Farm, <http://www.monchesfarm.com/>

Wednesday, October 28, Rotary Botanical Gardens Evening Garden Seminar - Bulbs in the Landscape, 6:30-8 pm, 1455 Palmer Drive, Janesville, <http://rotarybotanicalgardens.org/events>

Saturday, November 7, Rotary Botanical Garden Fall Symposium, 9:00 am-4:00 pm Speakers will include: Joel Karsten, author of *Straw Bale Gardening* will speak on *Building an Outdoor Room*; Jeff Epping, Horticulture Director at Olbrich Botanical

Gardens in Madison, will speak and demonstrate *How to Properly Prune Shrubs*; Michael Gaffney, Founder of the American School of Floral Design and the author of **Design Star: Lessons from the New York School of Floral Design**, will speak about floral design while he creates 5-10 arrangements live. There will also be a book-signing. Registration coming soon. Questions? Contact Kris Koch, Education Coordinator, at 608-752-3885 ext. 17 or kris.koch@rotarygardens.org

Tuesday, November 17, Rotary Botanical Gardens Evening Garden Seminar - Late Season Interest, 6:30-8 pm, 1455 Palmer Drive, Janesville, <http://rotarybotanicalgardens.org/events>

Wednesday, November 18, WHPS Program - Cool, Non-wimpy Plants You Haven't Heard of, Joseph Tychonievich, author, *Plant Breeding for the Home Gardener* and a new book on rock gardens due in 2015, and former manager of Arrowhead Alpines, <http://www.greensparrowgardens.com/>

Wednesday, December 2, WHPS Annual Meeting, Member Potpourri and Seed Exchange, 6:30 p.m. Olbrich Gardens.

December - Rotary Botanical Gardens; Holiday Light Show and Wednesday, December 16, Evening Garden Seminar - Behind the Scenes: Holiday Light Show, 6:30-8 pm, 1455 Palmer Drive, Janesville, <http://rotarybotanicalgardens.org/events>

December 2015 - Olbrich's Holiday Express - Flower and Model Train Show, Olbrich Botanical Gardens, Madison. Tinkling lights, festive poinsettias, tiny landscapes, and large-scale model trains: all aboard for Olbrich's Holiday Express! Trains travel through miniature evergreen forests and colorful poinsettias as they make their way through a detailed landscape made of natural materials by Olbrich's horticulture staff. Daily from 10:00 a.m. to 4:00 p.m., except Dec 24 (closes at 2pm) and closed Dec 25. Admission is \$3 for adults, \$2 for children ages 3-12 (OBS members free) and includes admission to the tropical Bolz Conservatory. Admission is free each Wednesday 10 a.m. to noon. For more information contact Olbrich Botanical Gardens, 3330 Atwood Ave., Madison, WI 53704; phone (608) 246-4550.

late Jan 2016, *Orchid Quest 2015* Madison, WI This annual mid-winter show and sale of the Madison Orchid Growers Guild will be from 10:00 a.m. to 5:00 p.m. on Saturday and until 4:00 p.m. on Sunday at a new venue, Marriott West Conference Center, 1313 John Q. Hammons Dr., Middleton, WI. For more info call (608) 592-7906.

Feb 12-14, 2016 WPT's Garden Expo, Exhibition Hall, Alliant Energy Center, Madison, WI. Hours are Fri 3:00-9:00, Sat 9:00-6:00, and Sun 10:00-4:00.



"It is a sad moment when the first phlox appears. It is the amber light indicating the end of the great burst of early summer and suggesting that we must now start looking forward to autumn. Not that I have any objection to autumn as a season, full of its own beauty; but I just cannot bear to see another summer go, and I recoil from what the first hint of autumn means."

—Vita Sackville-West

Plant Sale Benefits Local Gardens

Each year, plants left at the end of the WHPS Annual Plant Sale are offered to local garden projects. Over the years, we've contributed to gardens at local housing communities, the Madison Metropolitan School District, Habitat for Humanity, a Native American community garden and others. If you know of a garden project that might benefit from some of the plants left at a future sale, please contact Stephanie O'Neal at sone2@aol.com. Below are a couple of thank-yous received from recent contributions.

From Orton Park Gardeners

Thanks to plants donated by the Wisconsin Hardy Plant Society, six lovely perennial beds, as well as perennial beds in two adjacent traffic islands, grace Orton Park on Madison's east side.

WHPS has generously donated plants for several years from its annual plant sale to volunteers who maintain the gardens in the park. Plants need to be replaced regularly as foot and bicycle traffic, as well as road salt and snow plowing, make growing conditions challenging.

The garden beds are a lovely addition to the park which is the centerpiece of the Marquette-Williamson neighborhood. Plants have also been provided by the City Parks Department and neighbors. Thank you to the Hardy Plant Society and the members who donate the plants for brightening the Orton Park neighborhood.

— Ellen Henningsen, Orton Park Gardener

From Bay Creek Neighborhood Association & Friends of Olin-Turville Bay (FOOT)

Thank you so much for the donation of plants from the Wisconsin Hardy Plant Society. I speak for two organizations: Bay Creek Neighborhood Association and FOOT - Friends of Olin-Turville Bay. Bay Creek has a small orchard and butterfly garden across from Goodman Pool and FOOT works on many projects in Turville Point Conservator Park.

Your plants have found a home in one of these places. Thanks again for your donations.

— Andria Blattner



Spectacular pond and prairie at the home of Linda and Phil Grosz at the WHPS far West side garden tour July 23.

Schonheit Gardens Hiring

We're hiring for fall and spring! We are also hiring seasonal plant experts in the nursery for April into June too, or even just May. During time of employment, we offer a 25% discount on all things we sell in nursery to those workers!

We are now accepting applications for the 2015 & 2016 seasons. Part-time and full-time positions available in garden maintenance and landscaping installation—including supervisory and entry level positions. Positions would start immediately.

Schönheit Gardens offers an exciting work environment with many opportunities for professional growth along with competitive wages and benefits. All successful applicants must demonstrate the ability to be self-starting as well as work cooperatively and efficiently in a team environment. Applicants must share our commitment to the highest standards in customer service, quality work, and professionalism.

Please send resume, cover letter, & references to the address below (email fine, too). Must have valid driver's license. Non-smokers only. Must be able to lift 40 lbs throughout the day.

Pay based on experience and/or relevant education. Health insurance after two months full-time, retirement plan, all tools/vehicles provided. Both part-time and full-time positions available.

Heidi Kuhman
Owner, Schönheit Gardens
Office: 242-8472
www.schonheitgardens.com
3577 Bailey Road
Sun Prairie, WI 53590

Recipe—Breakfast Bars

Created and served by WHPS member Vickie Lester
on June Green Bay Bus Trip

Ingredients:

19 dates
35 dried cranberries
1/2 12 ounce package dried apricots
1/4 cup sweetened coconut
10 whole lightly salted cashews
10 whole almonds (baking section of store)
1/4 cup baking walnuts
1/4 cup semi-sweet baking chocolate chips
8 ounce 'Jif' original creamy peanut butter
1 tablespoon honey
1 cup crisped rice product

I use a small food processor. Process the dried fruit, pulse action. It will form a sticky lump. Place the dried fruit in mixing bowl. Process the nuts and coconut. The fruit will look about twice as much as nuts. Mix the nuts with the fruit. Process the chocolate chips till fine. Stir the honey into the peanut butter in a small separate bowl. Add the chocolate chips to the nuts and fruit, mixed with spoon. With spoon blend in the peanut butter mixture. Add the crisp rice product. I put parchment paper inside a greased 8" x 8" pan. Scoop mixture onto paper in pan and press down till smooth. Refrigerate. Taste mixture before refrigeration and adjust to taste the peanut butter or rice product. This sounds wordy but goes fast. You can also substitute dried blueberries for some of the dried fruit. Instead of chocolate chips, adding dark chocolate with acai and blueberry flavor centers is yummy too. Enjoy!

Wisconsin Hardy Plant Society, Inc.



September 2015 Newsletter

211 S. Fair Oaks Avenue
Madison, WI 53704-5822

President Frank Greer, 608-233-4686, frgreer@sbcglobal.net
Vice President—Jane Gahlman, 608-837-2317,
jmgahlman@hotmail.com, Seed Exchange Coordinator and
Trip and Tour Co-Coordinator
Secretary—John Cannon, jtcannon@wisc.edu, Trip Committee
Treasurer—Diane Scharkey, dscharkey@gmail.com
Lynn Belanger, 608-215-9127, lynnbelanger7300@gmail.com
Caroline Bohler, Homegrown Flowers, 262-483-2500,
caroline@homegrownmadison.com
Emily Buckingham, 920-960-6928, emilycbuckingham@gmail.com
Jeannette Golden, 608-767-3736, jgolden4142@gmail.com,
Plant Sale Volunteer Coordinator
Cindy Hoffland, 608-233-8083, hofflc@gmail.com, Webmaster
Jane LaFlash, 608-243-1208, jlafash@wisc.edu,
Membership Coordinator and Trip and Tour Co-Coordinator
Terri Maliszewski-Kane, 608-513-4189, terrimk1@hotmail.com,
Olbrich Liaison
Linda Marx, 608-249-7717, ljmarx@chorus.net, Plant Dig Coordinator
Stephanie O'Neal, 608-256-6108, sone2@aol.com,
Publications and Plant Exchange
Eleanor Rodini, H: 608-257-2984; Cell: 608-576-7099,
emrodini@wisc.edu, WHPS Garden Expo Display Coordinator
Conrad Wrzesinski, 608-231-3279, conradw@charter.net

Do you have a question about your membership? Contact Jane LaFlash at whps05@yahoo.com, 608-243-1208.

..... Member news, tips, etc.

LOST & FOUND

A woman's jacket was left behind after the May Plant Sale, email sone2@aol.com to identify and claim the jacket.

MEMBERS IN THE NEWS

The American Gardener: *The Magazine of the American Horticultural Society*, July/August 2015

AHS Members Making a Difference—Betty Adelman

Article saluting Betty Adelman of Heritage Flower Farm in Mukwanago for her work “cultivating connections” through heirloom plants.

<http://mydigimag.rrd.com/publication/?i=265668>

Washington Post - July 15

By any other name, the Knock Out Rose would be just as sturdy—William Radler and the development of the Knock Out Rose, http://www.washingtonpost.com/business/economy/by-any-other-name-the-knock-out-rose-would-be-just-as-sturdy/2015/07/15/ff31635e-2713-11e5-aae2-6c4f59b050aa_story.html

Plant Sale Needs 4” pots

If you have any extra 4” square plastic pots, (3.5 and 5 inches tall) and “flat flats” to contribute to next year’s Plant Sale, please email Stephanie O’Neal at sone2@aol.com

WHPS T-shirts available!



WHPS T-shirts available for purchase (sizes S-M-L-XL-XXL-XXXL) \$12 each. Please send an email to Jane Gahlman at jmgahlman@hotmail.com, or call Jane at 608-837-2317 if you would like to buy one. Great for volunteers!

Buy shirt; volunteer for Expo or Plant Sale; wear shirt

Weed Identified



At the summer West Side Garden Tour many of us were stumped by a translucent-stemmed weed found in the garden of Jennifer Ondrejka that we all seemed to be dealing with (very easy to pull, but crops up annoyingly fast). Weed identified! *Pilea pumila*, or Clearweed, from the Nettle family.

<http://www.illinoiswildflowers.info/woodland/plants/clearweed.htm>

Visit our website: <http://www.wisconsinhardyplantsociety.com>